



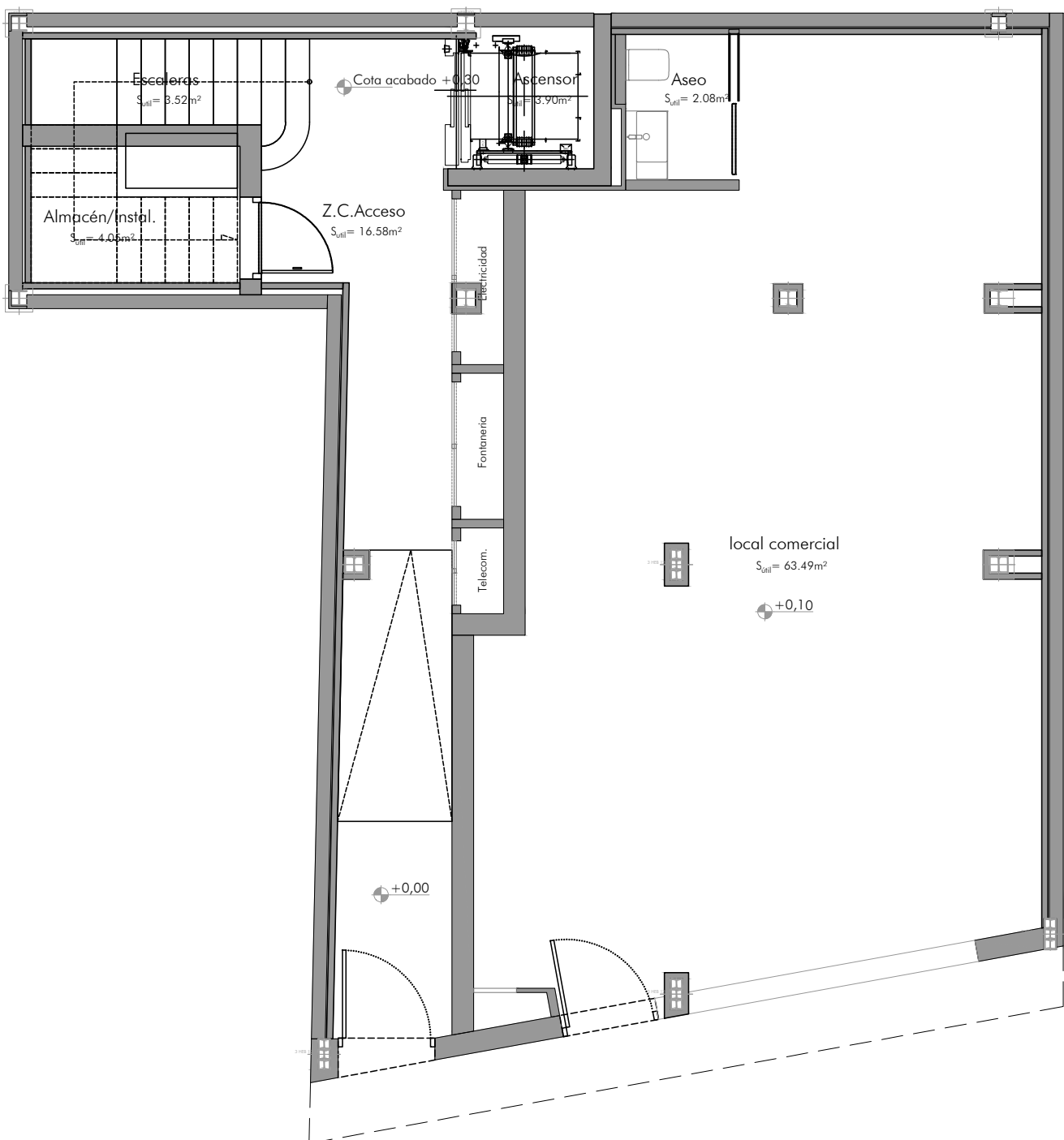
ALMA REAL 140

FLOORPLANS



ALMA REAL 140

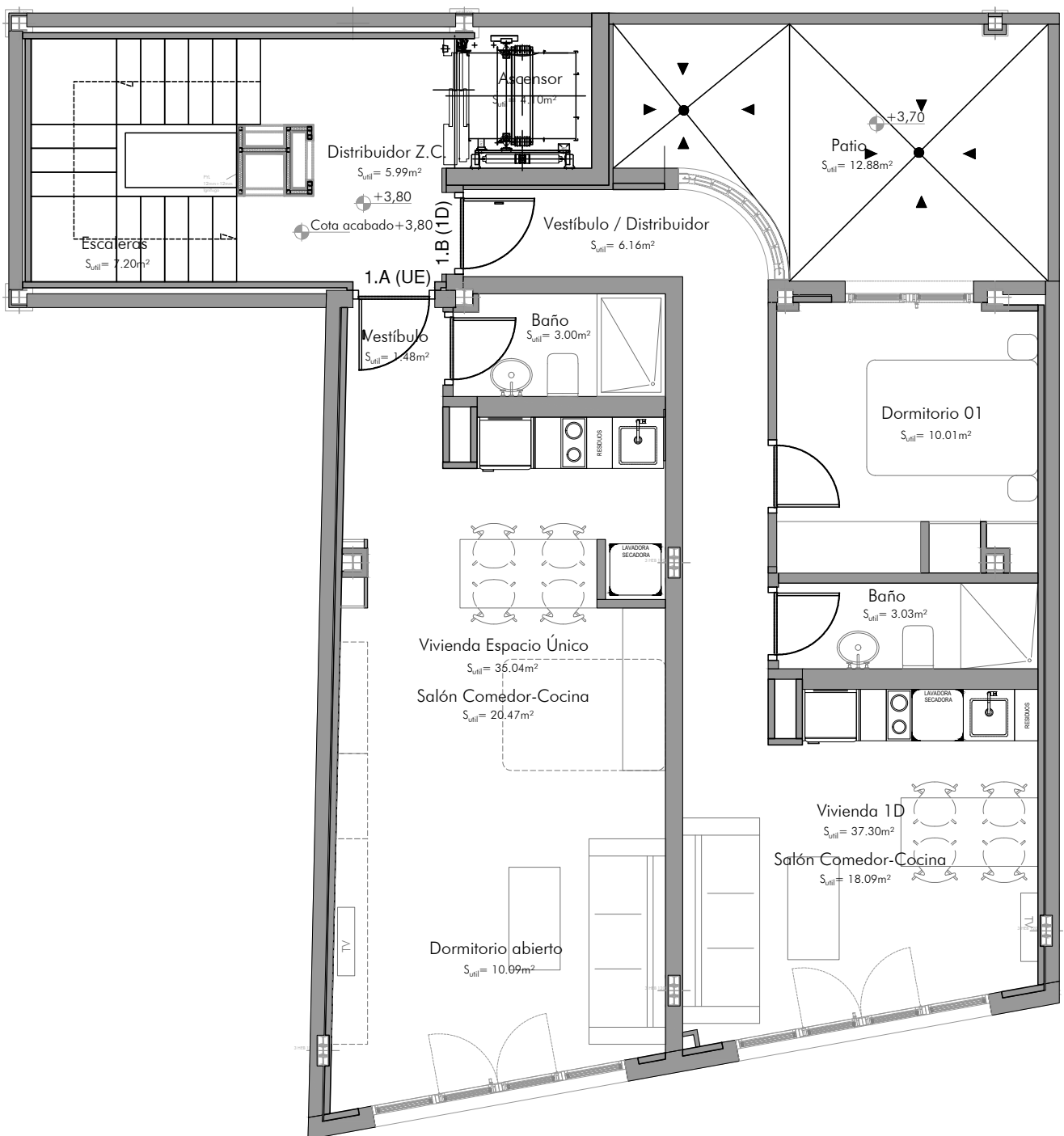
Ground Floor - Alma Space





ALMA REAL 140

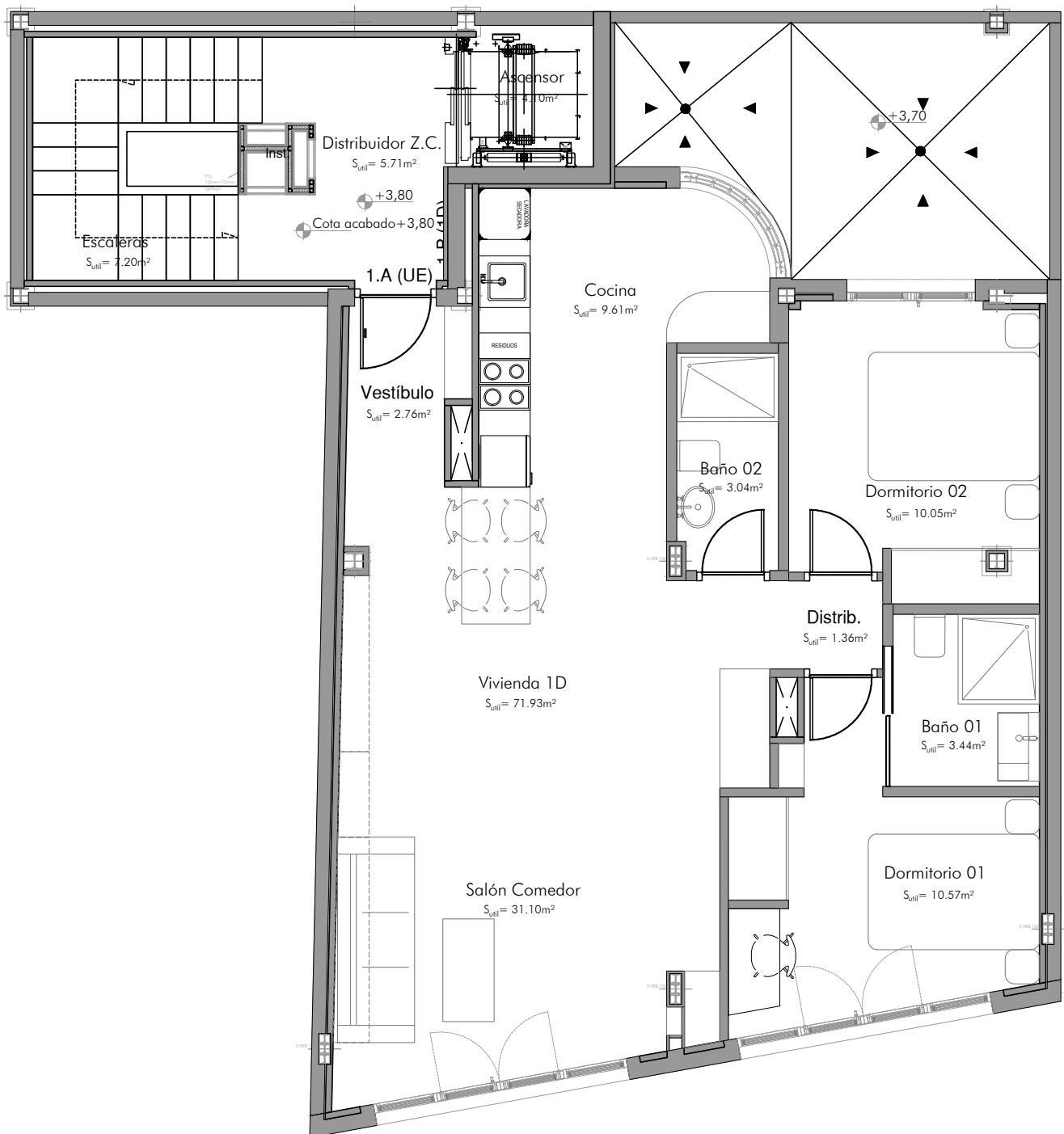
First Floor - Alba / Luz





ALMA REAL 140

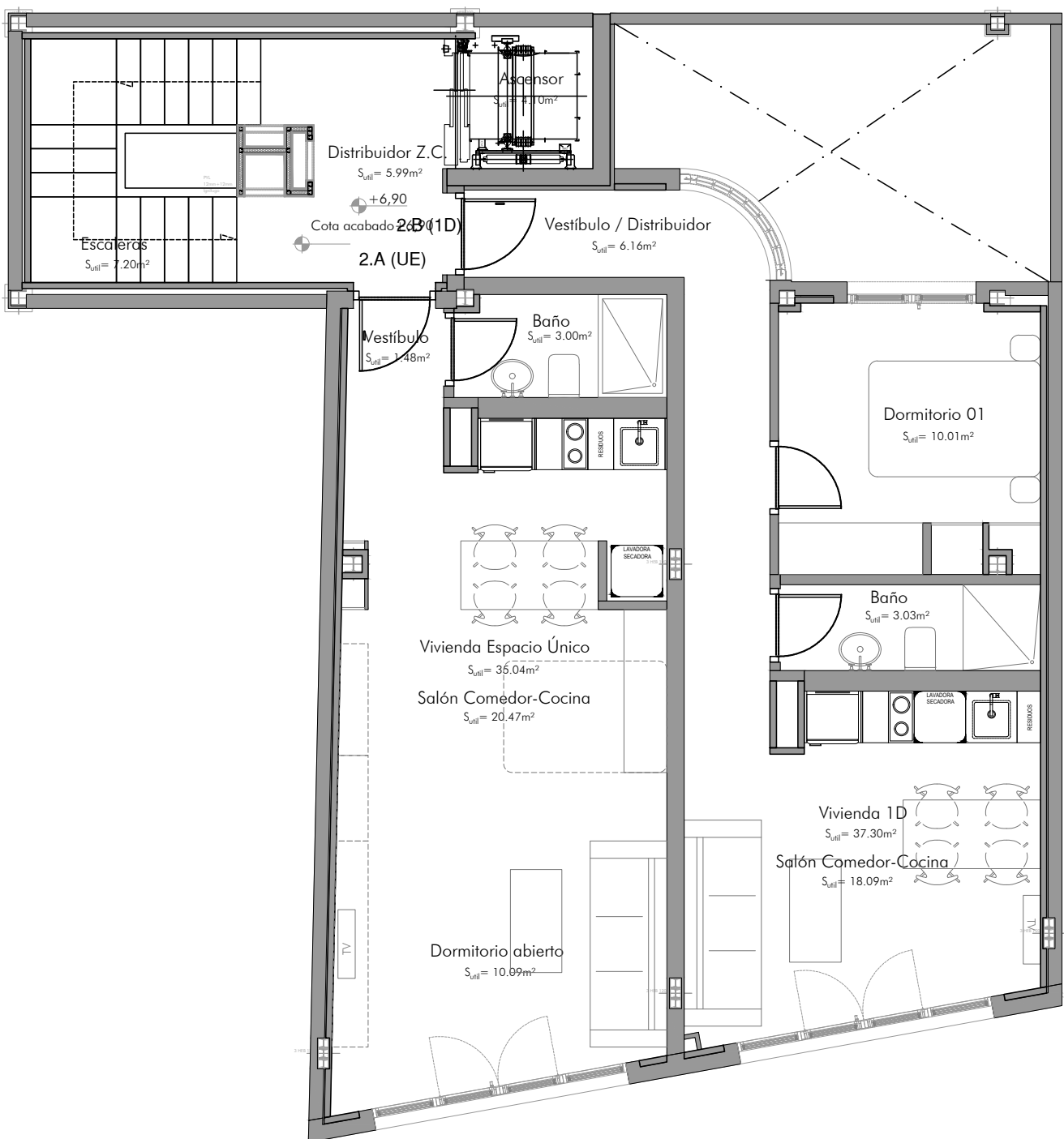
First Floor - Alba + Luz





ALMA REAL 140

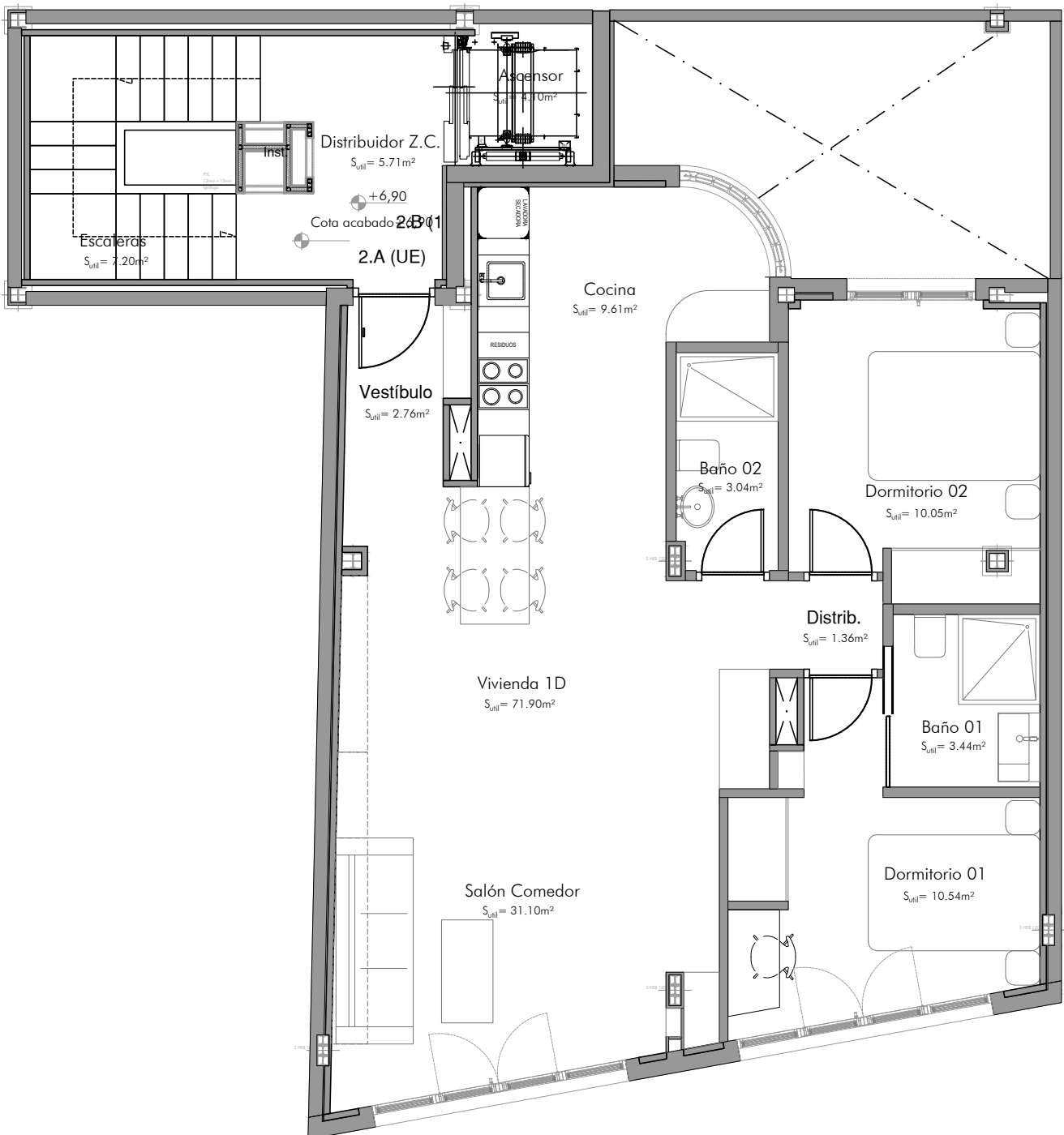
Second Floor - Brisa / Calma





ALMA REAL 140

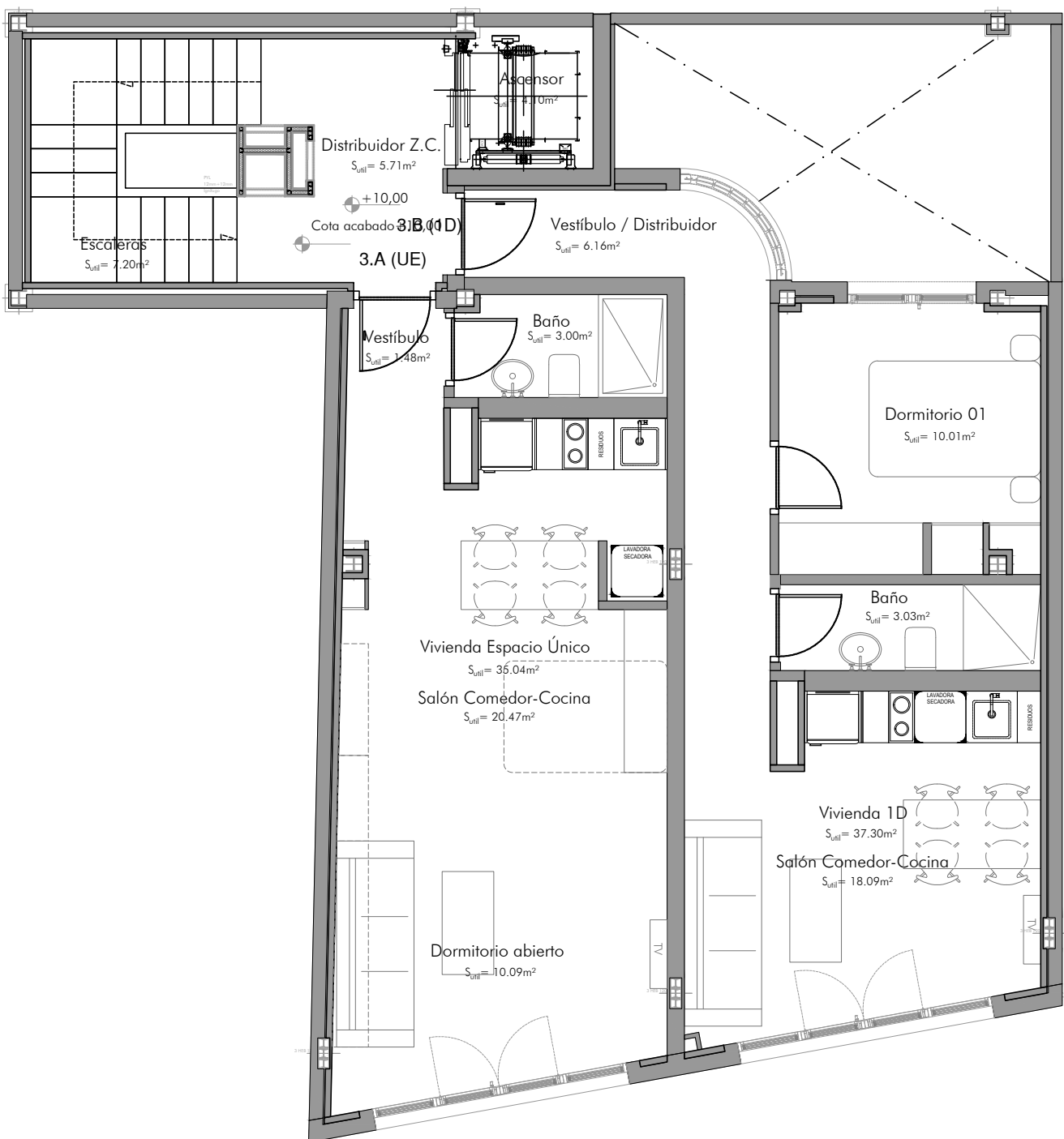
Second Floor - Brisa + Calma





ALMA REAL 140

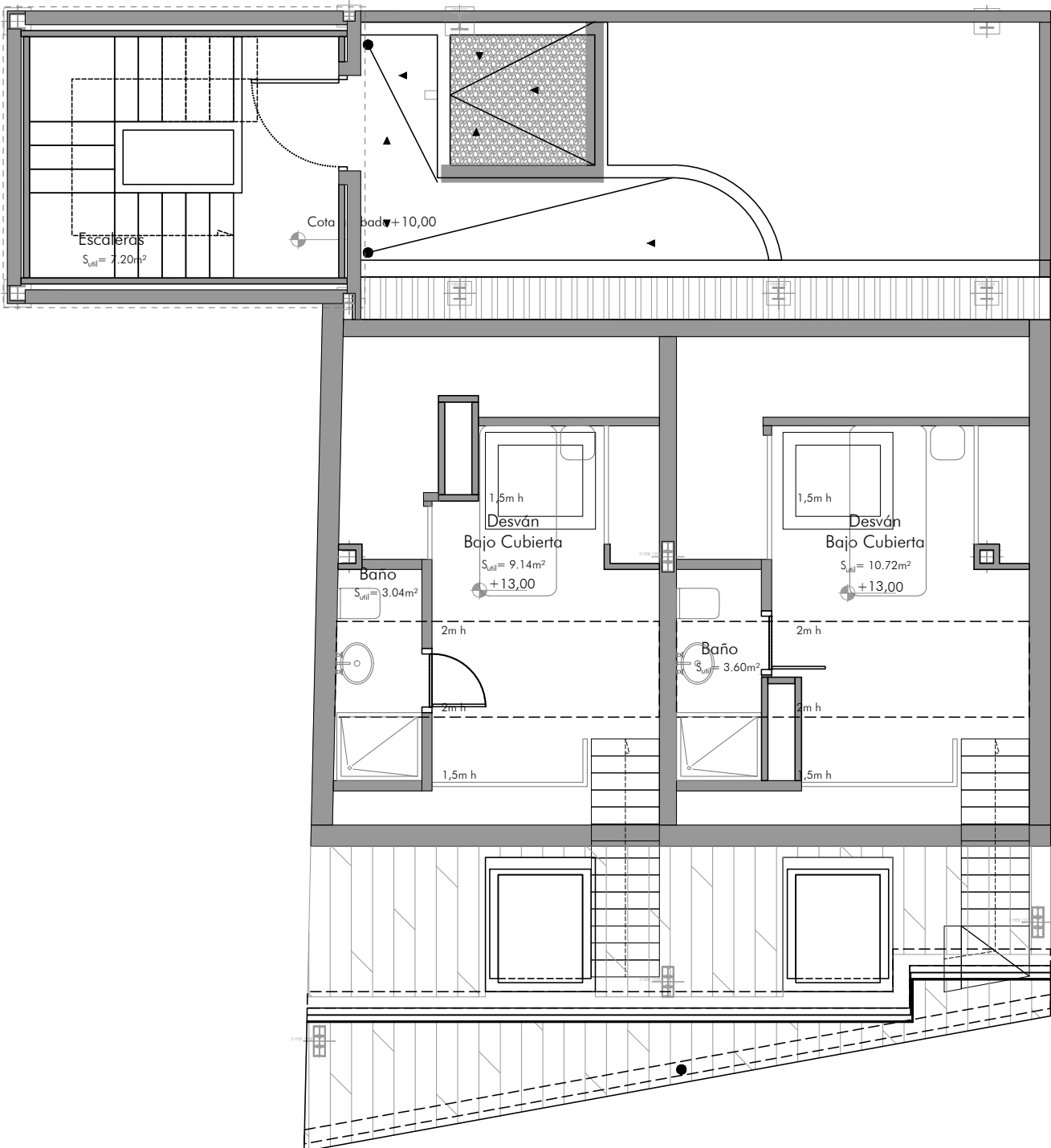
Third Floor - Marea / Horizonte





ALMA REAL 140

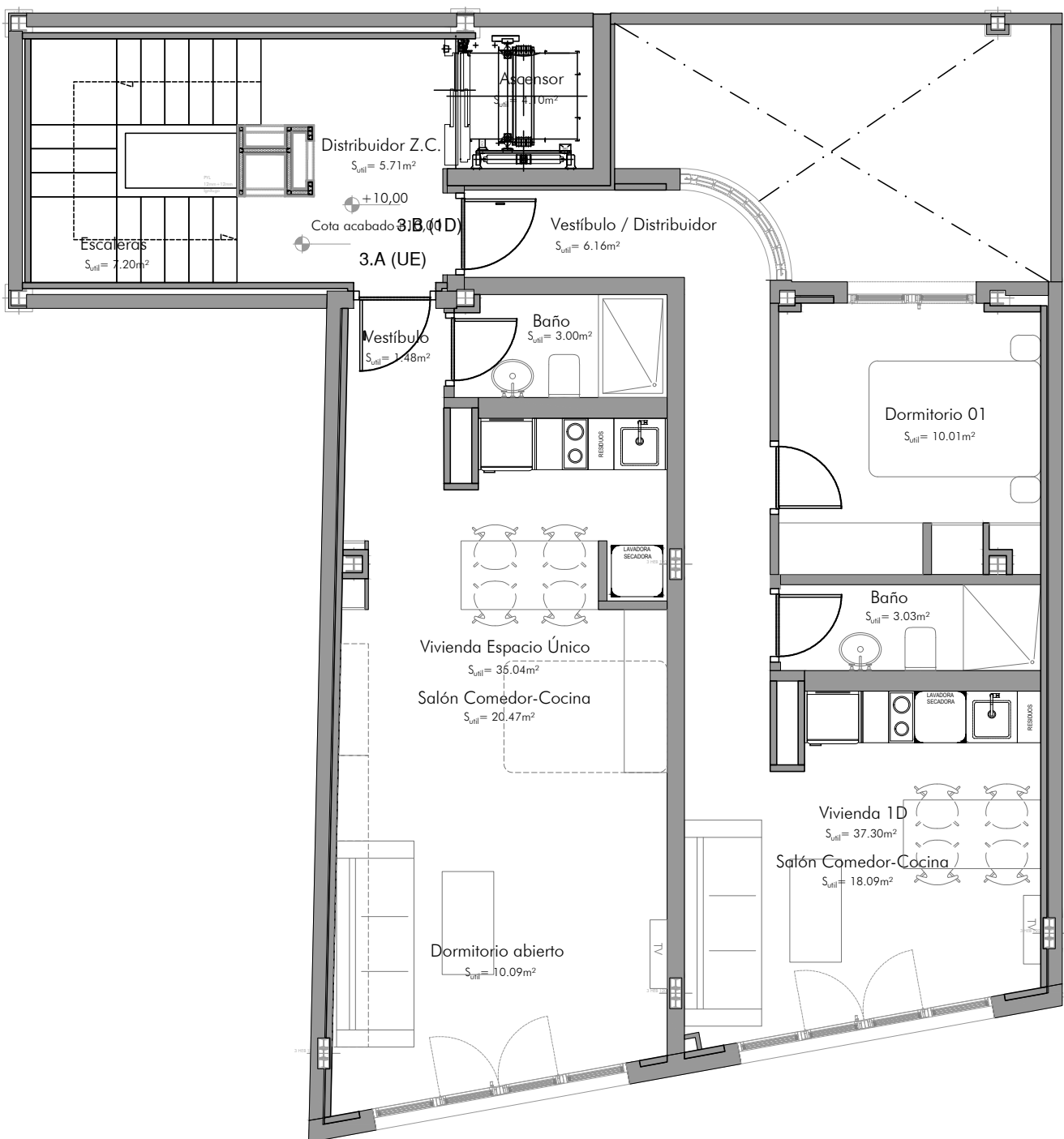
Rooftop Floor - Marea / Horizonte





ALMA REAL 140

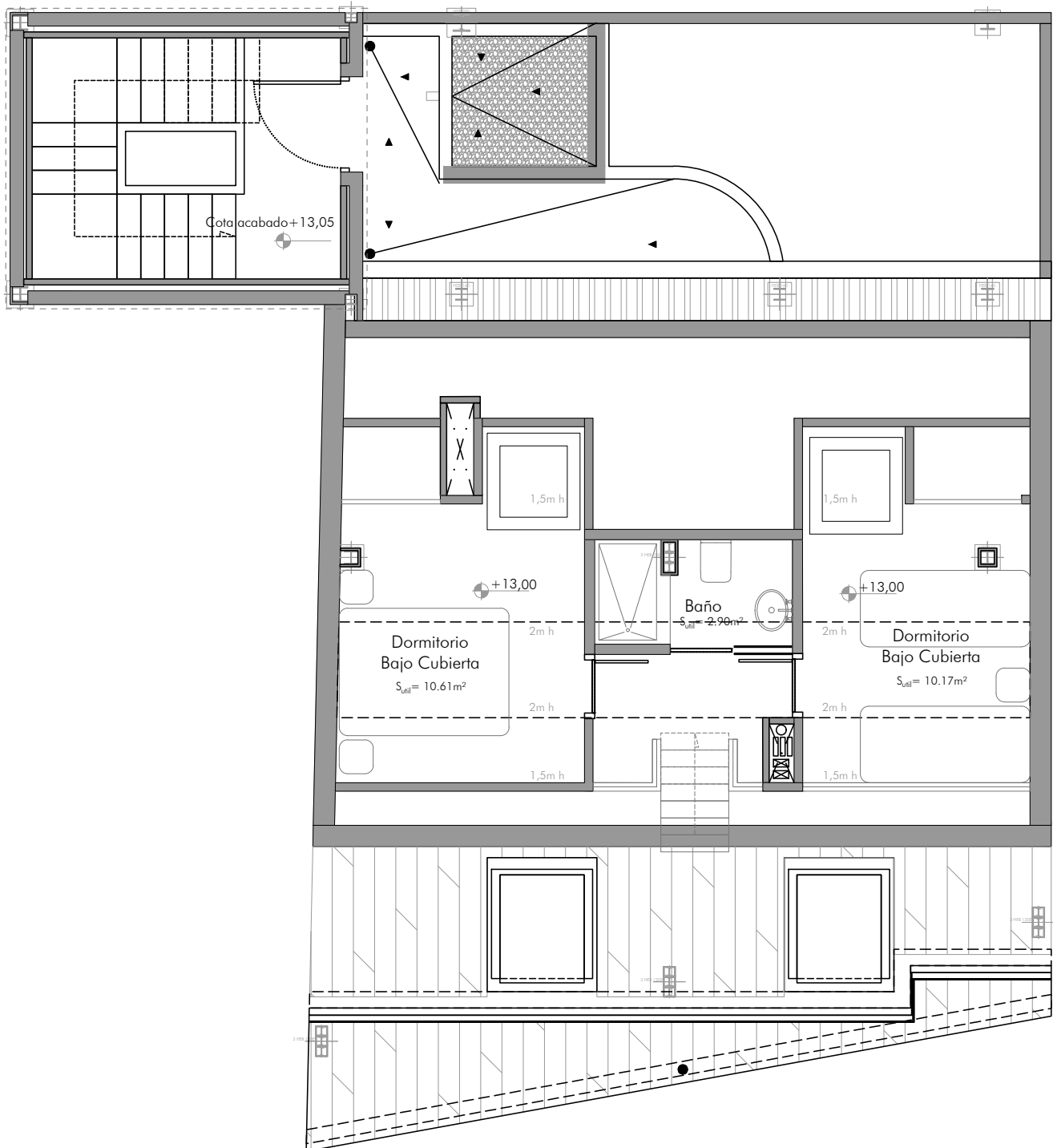
Third Floor - Marea + Horizonte





ALMA REAL 140

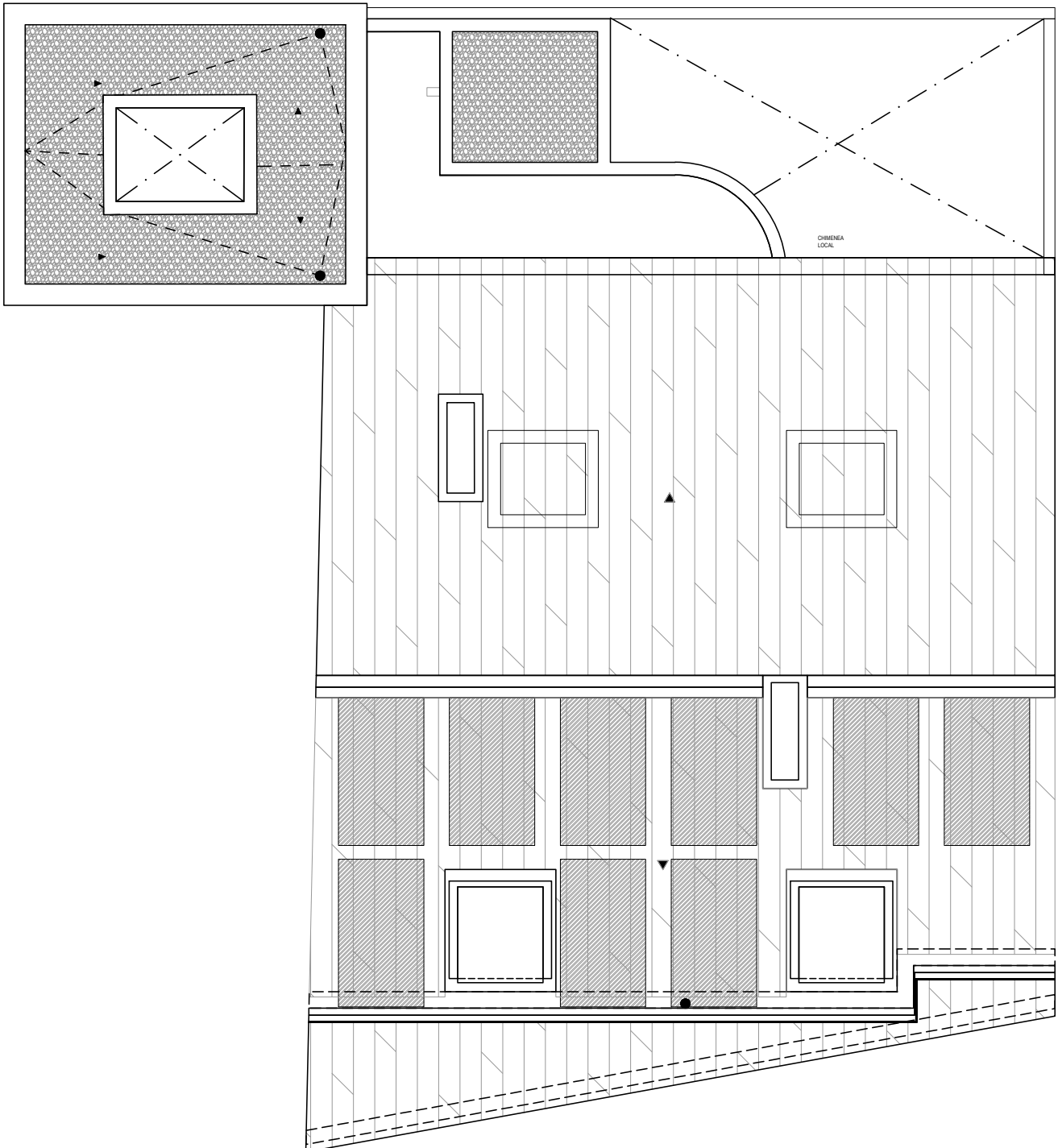
Rooftop Floor - Marea + Horizonte





ALMA REAL 140

Roof





ALMA REAL 140

Tel: 686 668 852

info@almareal140.es

www.almareal140.es

Sales agent:



Sales Office:



Developer:



Gallego y Mota arquitectos



Fusión
& Fuga

Interiorismo y decoración

Legal Notice

The information contained in this document, including texts, plans, infographics, images, renders and any other content, is provided for informational and illustrative purposes only and does not constitute a contractual offer nor form part of any potential contractual relationship. The development is currently being marketed off-plan and may be subject to modifications arising from technical, legal, urban planning, commercial or administrative requirements, as well as from decisions taken by the project management team during the construction process, provided that such modifications do not substantially alter the nature of the development. The surfaces, layouts and dimensions indicated are approximate and may vary in accordance with the execution project and the final built work. Images, infographics and renders are purely illustrative and may not correspond exactly to the final result, particularly with regard to finishes, tones, textures, surroundings, vegetation and neighbouring buildings. Due to the development's location within a consolidated urban environment, views, lighting conditions, noise levels, traffic, as well as the configuration and use of neighbouring plots and buildings, may be altered by existing or future urban developments, and therefore cannot be guaranteed. Furniture, equipment, appliances and decorative elements are not included unless expressly stated in the specifications document. The only legally binding information shall be that contained in the contractual documentation that may eventually be formalised, together with the specifications document incorporated therein.